

# QRF/QRM ISO 'B' SERIES

## ISO.B PULL BREAK HYDRAULIC COUPLINGS

### 1/4" - 1" Poppet Valve Type

Manufactured to the ISO 7241 Series 'B'

## INTRODUCTION

ISO 'B' couplings are of superior quality and have been designed to compete with other ISO 7241 products with their durability & toughness. They are suited for heavy duty applications which include:

- Food processing and manufacture
- Shipbuilding
- Offshore
- Machine tool/automation
- Oil refineries
- Steel mills
- Chemicals and pharmaceuticals

## BENEFIT OF HOLMBURY ISO 'B' COUPLERS

Designed to withstand high pressure peaks and pulses.

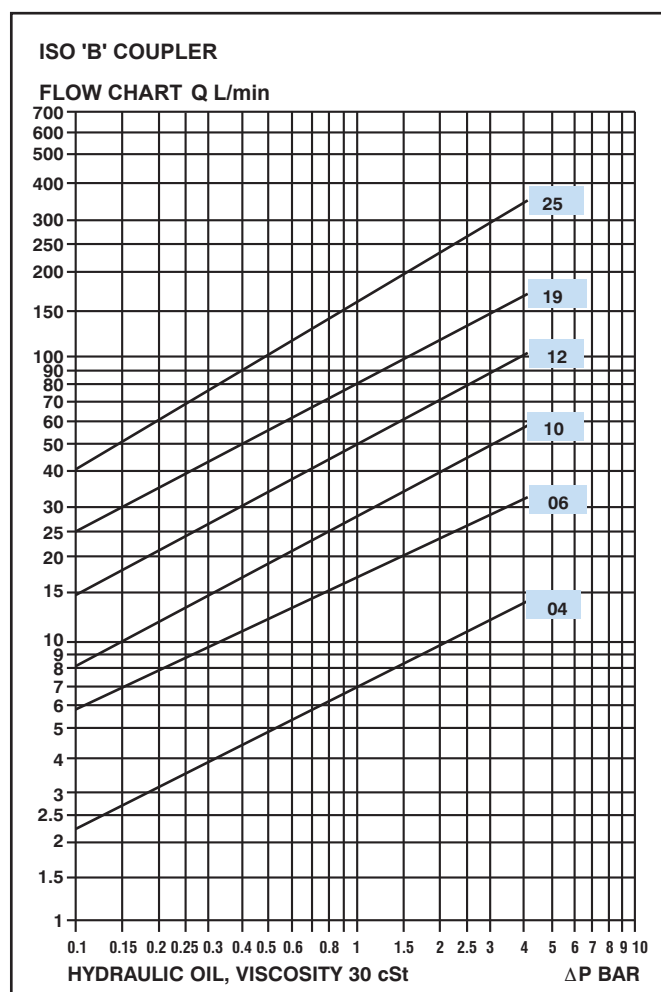
Material AISI 316 stainless steel with viton seals. The locking ball system ensures Positive quick connection.

When these couplers are connected the male and female halves are able rotate, even under pressure, thus avoiding any stress created by the twisting of flexible hoses.

Due to the specially machined oil passages and the Poppet valves having balanced springs it reduces pressure drop.

The Poppet valve seals also have shockproof protective edges.

## PRESSURE DROP FLOW CHART



## CONSTRUCTION

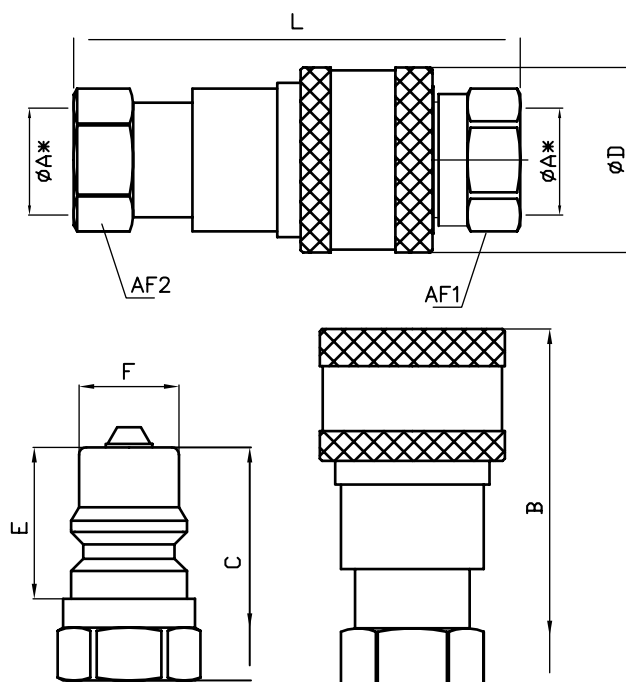
Heat treated, carbon steel, zinc plated . Nitrile 'O' ring seals with Teflon backing rings.

### ISO 'B' TESTS

Life - 1,000,000 cycles from 0 - 250 bar at a frequency of 1Hz.



## ISO 'B' SERIES DATA SHEET



### DATA SHEET

Body size	ND	Maximum operating pressure (bar)	ØA*	AF1	AF2	A	B	C	ØD	E	F	L
06	6.3	300	1/4"	19	19	13	58	22.8	28.5	36	14.1	72
10	10	250	3/8"	24	24	13	65	25	35	40	19	81
12	12.5	250	1/2"	28.5	28.5	20.5	74	28	44.5	46.5	23.5	93.5
19	20	230	3/4"	36	36	22	92	36	54	56	31.4	113
25	25	230	1"	41	41	23	103	45	63.5	63	37.7	127

A\*=inch size BSP

Dimensions in mm

